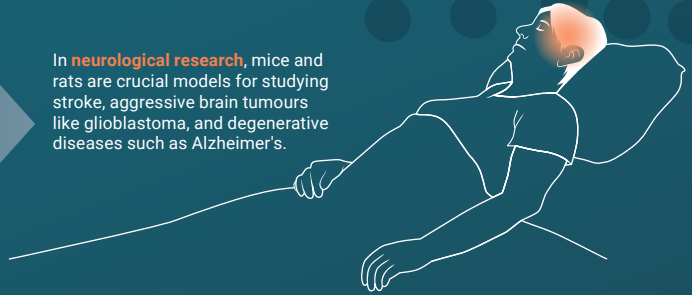


# WHY ARE ANIMAL EXPERIMENTS THAT CAUSE SEVERE SUFFERING STILL NECESSARY?

They are key to overcoming life-threatening diseases



In **neurological research**, mice and rats are crucial models for studying stroke, aggressive brain tumours like glioblastoma, and degenerative diseases such as Alzheimer's.



While many **cancers** are now treatable, patient mortality persists, underscoring the continued necessity of animal models as the foundation for developing innovative therapies for both **humans and animals**.



Animal experiments in infection biology are indispensable for the urgent development of **novel antibiotics and essential vaccines** to combat emerging and existing threats.



The development of life-saving treatments for serious diseases depends, among other methods, also on severe animal experiments. Current in vitro methods, like cell cultures and organoids, or computer models alone, cannot replicate the complexity of these conditions. Past animal research delivered landmark medical breakthroughs resulting in the prevention, treatment, and cure of previously fatal diseases, but despite these advancements, many conditions still cause immense suffering to humans and animals. To effectively tackle these, in-depth research is essential. For numerous serious conditions, this unfortunately still necessitates carefully regulated studies involving severe animal experiments.

## WHAT WOULD WE LOSE BY BANNING SEVERE ANIMAL EXPERIMENTS IN EUROPE?

Critical disease research would be crippled, leaving European patients without hope for new treatments. Those battling metastasizing cancer, Alzheimer's disease, arthritis, and severe infections would become completely dependent on foreign breakthroughs and advancements. Europe's leading role in medical research would crumble, forcing us to depend entirely on other parts of the world for crucial medicines and vaccines.



### **Loss of research and innovation in Europe**

Europe leads in life-saving biomedical research, driven by top universities, institutes, and companies. This leadership depends on strictly regulated animal studies. A ban on severe animal experiments would cripple this vital innovation. Crucial health research and innovation would become far harder, or even impossible.

Therefore: regulation, yes. — A ban? No.

### **European biotech and pharma industry at risk**

European biotech and pharma companies, both small and large, create vital therapies for life-threatening diseases. A ban on severe animal experiments will cripple their research here, pushing development to other parts of the world. This will severely and permanently damage European biotech and pharma research standing.



In collaboration with  
Forschung für Leben

Animal  
Research  
Tomorrow



 animalresearchtomorrow.org